



PRO FOOTBALL HALL OF FAME MARATHON WATER STATIONS

2019 Water Station Guide

Thank you for participating in our 2019 Water Station program. The following pages contain the details, station by station, of each water station.

Captains – Each station should designate a Captain upon your arrival. The captain is critical in getting the station up and running. Passing out water is not rocket science but it is important to follow the structure and process in the document that we attached. We will have an open house to review the stations if anyone would like to stop in our office on Wednesday April 24th from 9am to noon – 604 6th St NW, Canton, OH 44703

Volunteers – If you are bringing your own volunteers please review this material with them. We will monitor the attendance of each water station and promote volunteers where it is needed.

Open House – Our office - located at 604 6th St NW, Canton, OH 44703 – will be open from 9am to noon on Wednesday April 24th. You are welcome to come in to discuss the race, meet the race staff, and get any of your questions answered.

Direct Contact – You may also contact our Executive Race Director Jim Chaney at 330-687-1519 if you prefer to do so. Jim will NOT be available on race day to assist you. Each water station has a Zone Manager assigned to it. Your zone manager will introduce themselves to you on race morning.

Station Instructions – Please review the attached Water Station Setup Instructions. It will take you through the steps needed to have a successful water station.

DOWNLOAD INSTRUCTIONS – You can download a copy of these instructions at www.hofmarathon.com/instructions - let your volunteers know that they can do the same.

Last Words – HAVE FUN!!!

ALL INFORMATION CAN BE FOUND ON WWW.HOFMARATHON.COM

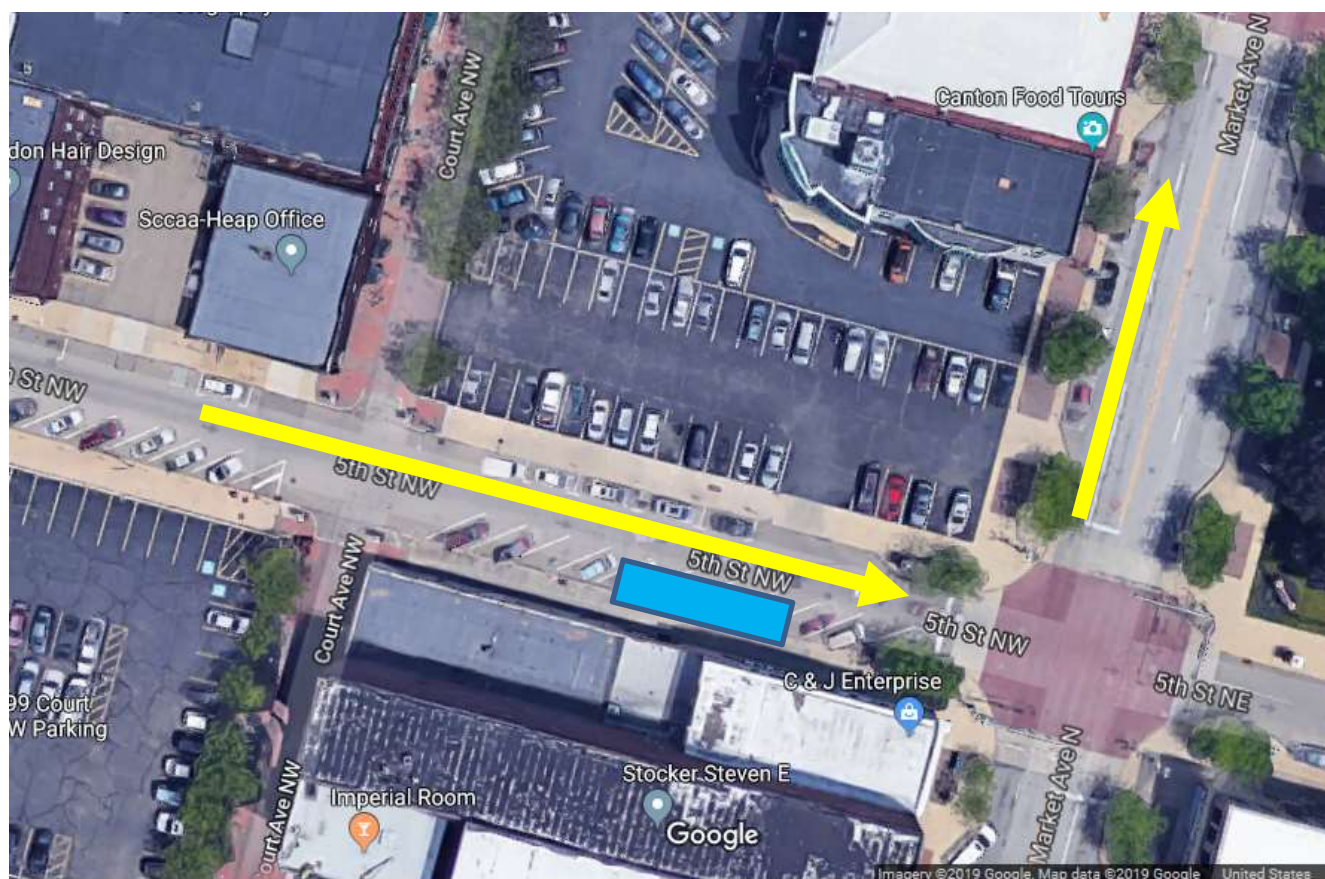
Water Station Mile 2.5

Sponsored by Envirosapes

Staffed by the Stark County Ski Club

Number of Volunteers Needed: 30

Located on 5TH St NW between Cleveland Ave N and Market Ave N



- Parking: Please park in the open lots off of 5th St NW
- First runner arrives at 7:10am / Last runner arrives at 7:48am
- Volunteers arrive at 6:15am / Supply Van + Captain arrives at 6:00am
- Set up complete by 6:50am
- You will have roughly 2,000 runners come past your station at mile 2.5

Water Station 4.5

Sponsored and Staffed by Hendrickson

Number of Volunteers Needed: 30

Located on 25th St NW / Harvard Ave NW



- Parking: Please park in the open lot at Malone University off of Harvard Ave NW
- First runner arrives at 7:20am / Last runner arrives at 8:25am
- Volunteers arrive at 6:20am / Supply Van + Captain arrives at 6:15am
- Set up complete by 7:00am
- You will have roughly 2,000 runners come past your station at mile 4.5

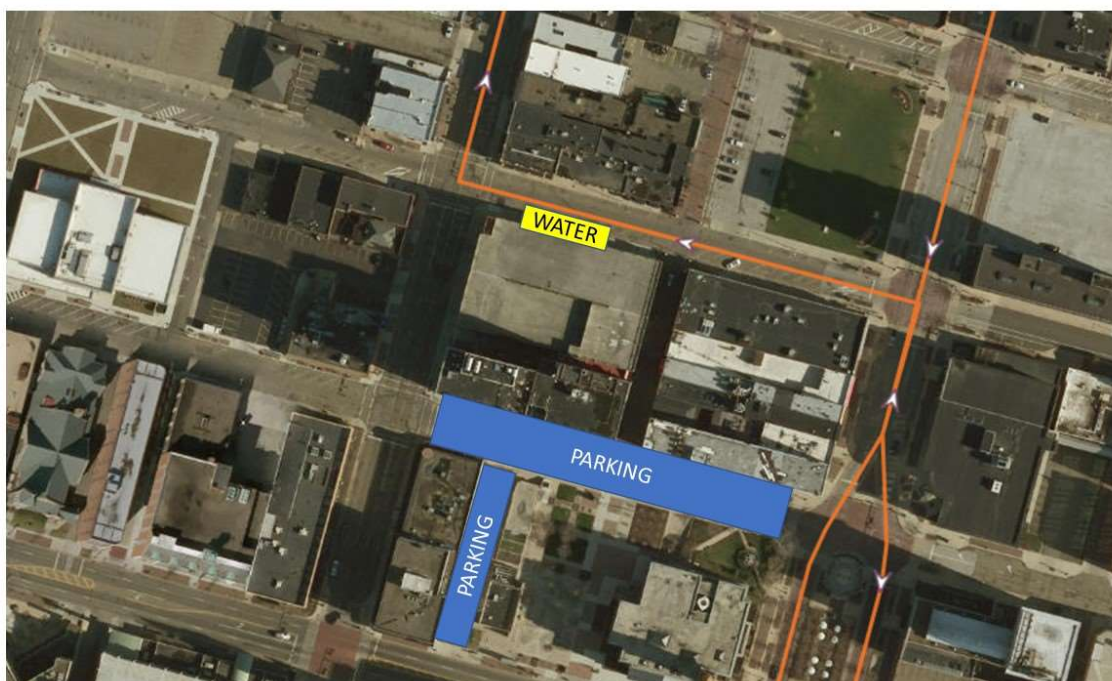
Water Station 6.5

Sponsored by Spectrum Orthopaedic Group

Staffed by GlenOak High School

Number of Volunteers Needed: 20-30

Located on 3rd St NW just EAST of Cleveland Ave N near the Canton Brewing Company



- Parking: Please park in the street on 2nd Ave NW and in any of the side lots
- First runner arrives at 7:30am / Last runner arrives at 9:00am
- Volunteers arrive at 6:40am / Supply Van + Captain arrives at 6:30am
- Set up complete by 7:10am
- You will have roughly 2,000 runners come past your station at mile 6.5

Water Station 8.5

Sponsored and Staffed by KIKO Company

Number of Volunteers Needed: 15 to 20

Located on Monument Road NW just before the turn towards Woody's Root Beer Stand



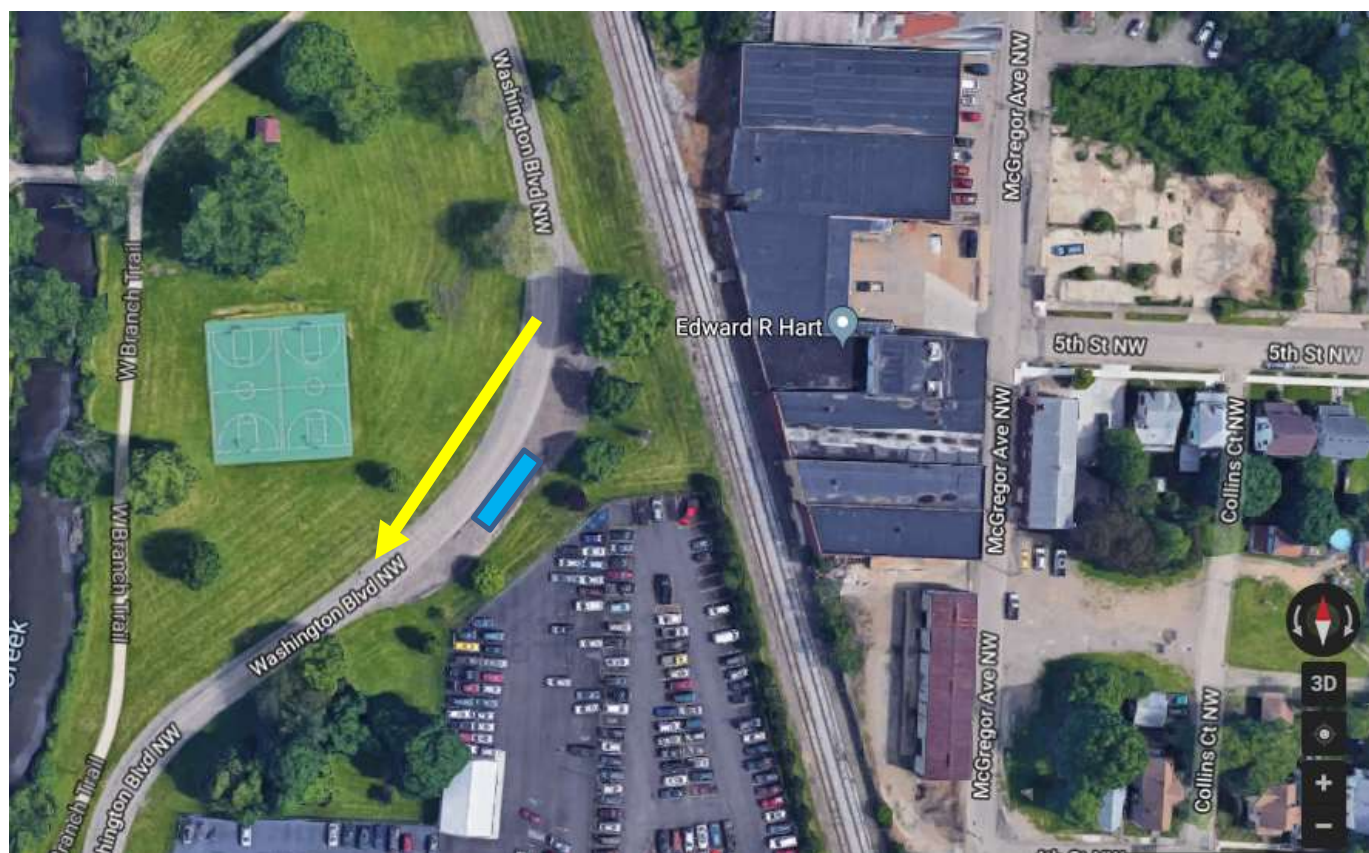
- Parking: Please park in the lot off of Fulton Rd NW which is ACROSS the street from the Water Station
- First runner arrives at 7:40am / Last runner arrives at 9:35am
- **** PLEASE NOTE THAT THE START OF THE RACE GOES RIGHT PAST YOU AT 7:00AM. DO NOT HAND OUT WATER AT THE START OF THE RACE. YOU WILL BEGIN SETTING UP BEFORE THE START OF THE RACE.
- Volunteers arrive at 6:40am / Supply Van + Captain arrives at 6:30am
- Set up complete by 7:15am
- You will have roughly 2,000 runners come past your station at mile 8.5

Water Station 10.7

Staffed by Team RWB

Number of Volunteers Needed: 20

Located on Washington Blvd NW



- Parking: Please park behind the Water Station on the gravel on Washington Blvd NW
- First runner arrives at 7:54am / Last runner arrives at 10:14am
- Volunteers arrive at 7:00am / Supply Van + Captain arrives at 6:55am
- Set up complete by 7:35am
- You will have roughly 2,000 runners come past your station at mile 10.7

Water Station 12.5

Staffed by Stark County Fair Board

Number of Volunteers Needed: 20

Located on Clarendon Ave NW / 6th St NW



- Parking: Please park on Clarendon Ave NW – SOUTH of the intersection
- First runner arrives at 8:05am / Last runner arrives at 10:00am
- Volunteers arrive at 7:10am / Supply Van + Captain arrives at 7:05am
- Set up complete by 7:40am
- You will have roughly 550 runners come past your station at mile 12.5

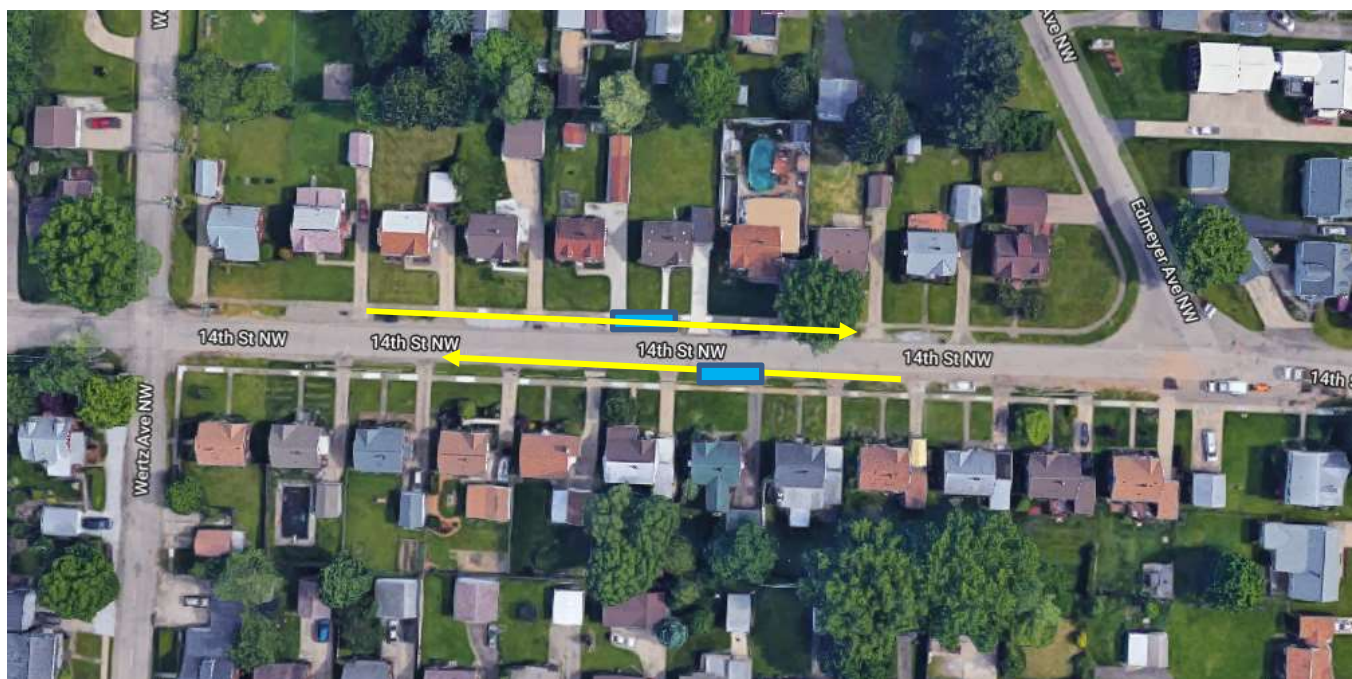
Water Station 14.5 / 24.6

Sponsored by Penske

Staffed by Walsh University Cross Country & Track

Number of Volunteers Needed: 15-20

Located on 14th St NW between Edmeyer Ave NW and Wertz Ave NW



- Parking: At Lehman Middle School off of Broad Ave NW – Walk to Water Station
- First runner arrives at 8:16am / Last runner arrives at 12:46pm
- Volunteers arrive at 7:40am / Captain arrives at 7:30am
- Set up complete by 8:00am
- You will have roughly 550 runners come past your station **TWICE**. Runners will be facing traffic. Consider doing shifts to cover the length of time. Theme the station as you like (shirts, signs, etc)
- Water Station will be located on BOTH sides of the road. Split the supplies and manpower as needed.



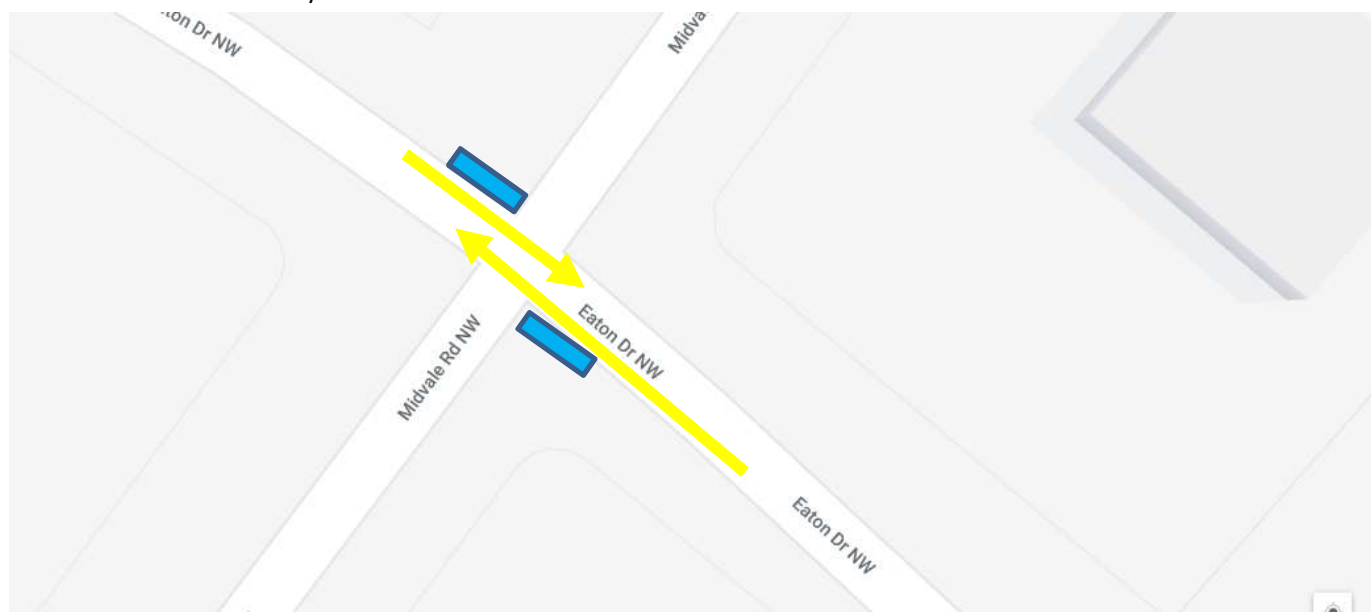
PRO FOOTBALL HALL OF FAME MARATHON WATER STATIONS

Water Station 16.5 / 22.6

Sponsored and Staffed by Stark Parks

Number of Volunteers Needed: 15

Located on Eaton Dr NW / Midvale Ave NW.



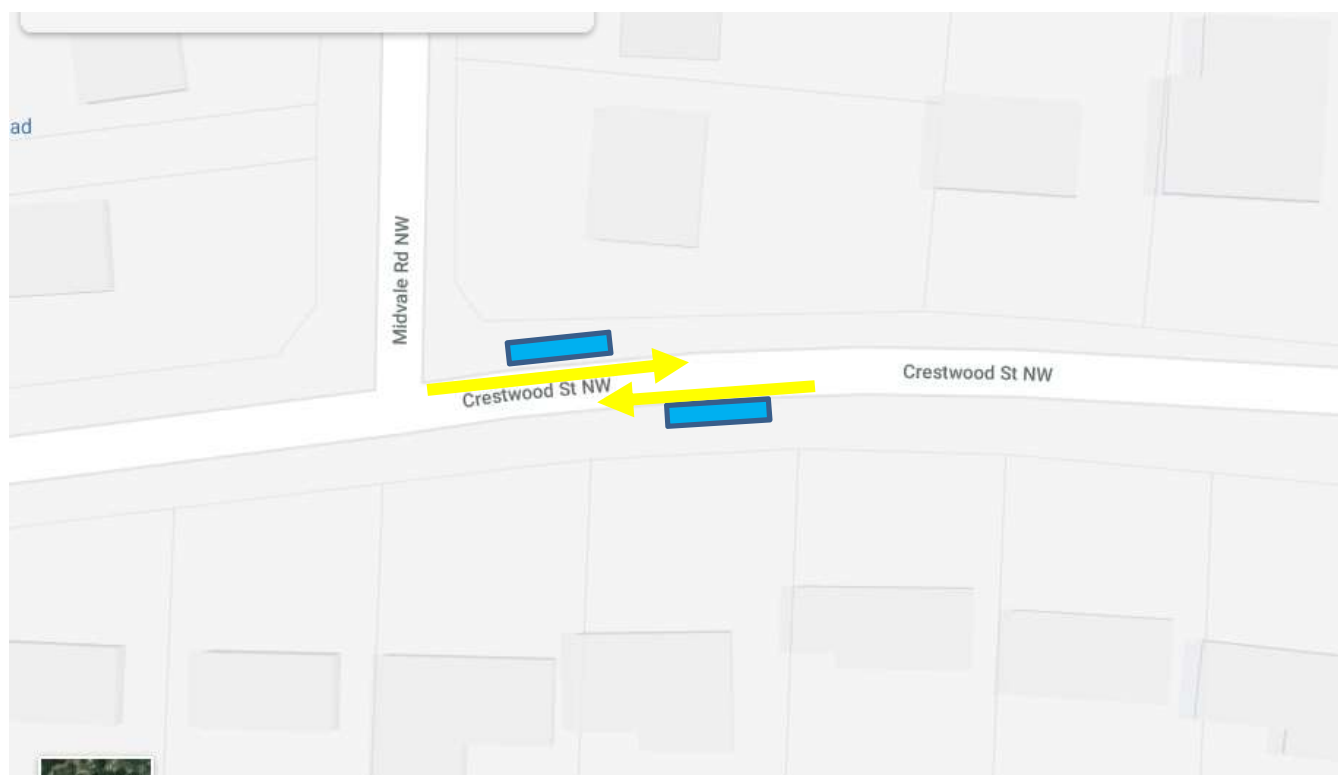
- Parking: On Midvale Rd NW to the NORTH of Eaton Dr NW. Park on the side of the road.
- First runner arrives at 8:27am / Last runner arrives at 12:19pm
- Volunteers arrive at 7:40am / Captain arrives at 7:30am
- Set up complete by 8:10am
- You will have roughly 550 runners come past your station **TWICE**. Runners will be facing traffic. Consider doing shifts to cover the length of time. Theme the station as you like (shirts, signs, etc)
- Water Station will be located on BOTH sides of the road. Split the supplies and manpower as needed.

Water Station 18.5 / 20.6

Staffed by Crestwood St NW Neighbors

Number of Volunteers Needed: 15

Located at 3823 Crestwood St NW



- Parking: On Midvale Rd NW to the NORTH of Crestwood St NW. Park on the side of the road.
- First runner arrives at 8:35am / Last runner arrives at 11:53am
- Volunteers arrive at 7:45am / Captain arrives at 7:40am
- Set up complete by 8:20am
- You will have roughly 550 runners come past your station **TWICE**. Runners will be facing traffic. Consider doing shifts to cover the length of time. Theme the station as you like (shirts, signs, etc)
- Water Station will be located on BOTH sides of the road. Split the supplies and manpower as needed.